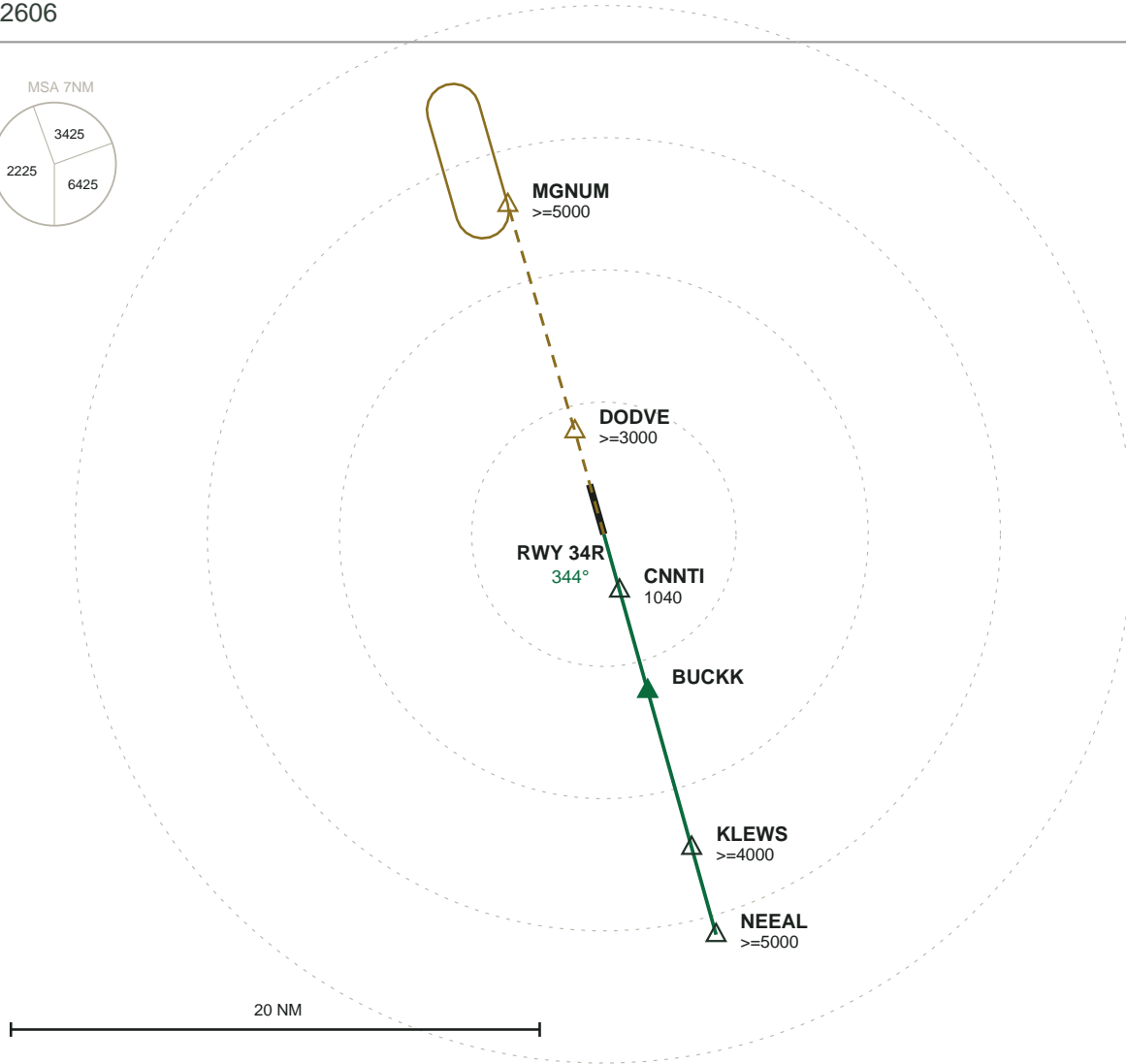
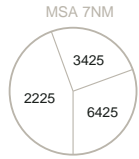


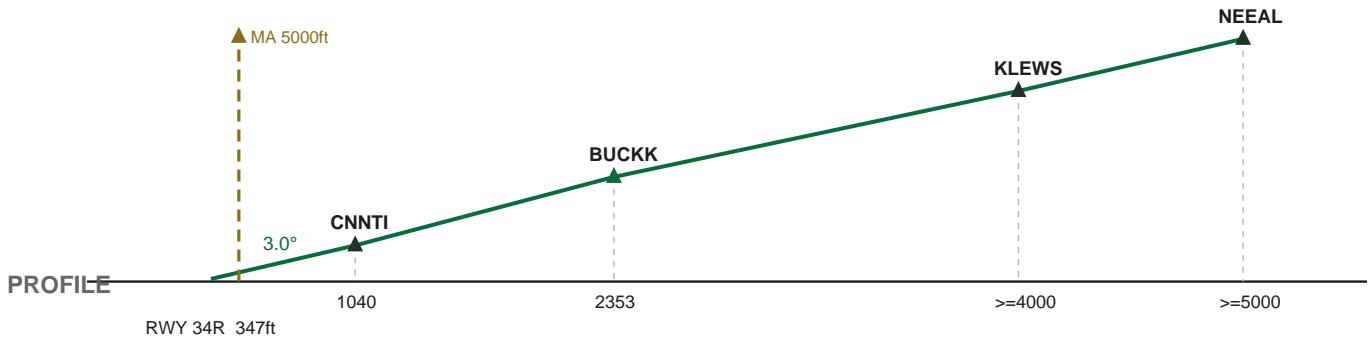
KSEA SEATTLE-TACOMA INTL

RNP 34R \hat{A} RWY 34R \hat{A} FAC 344°

AIRAC 2606



PLAN



PROFILE

MISSED APPROACH: Climb on heading 344° at or above 572 ft then direct DODVE, cross at or above 3000 ft then hold at MGNUM, right turns, inbound 164°,