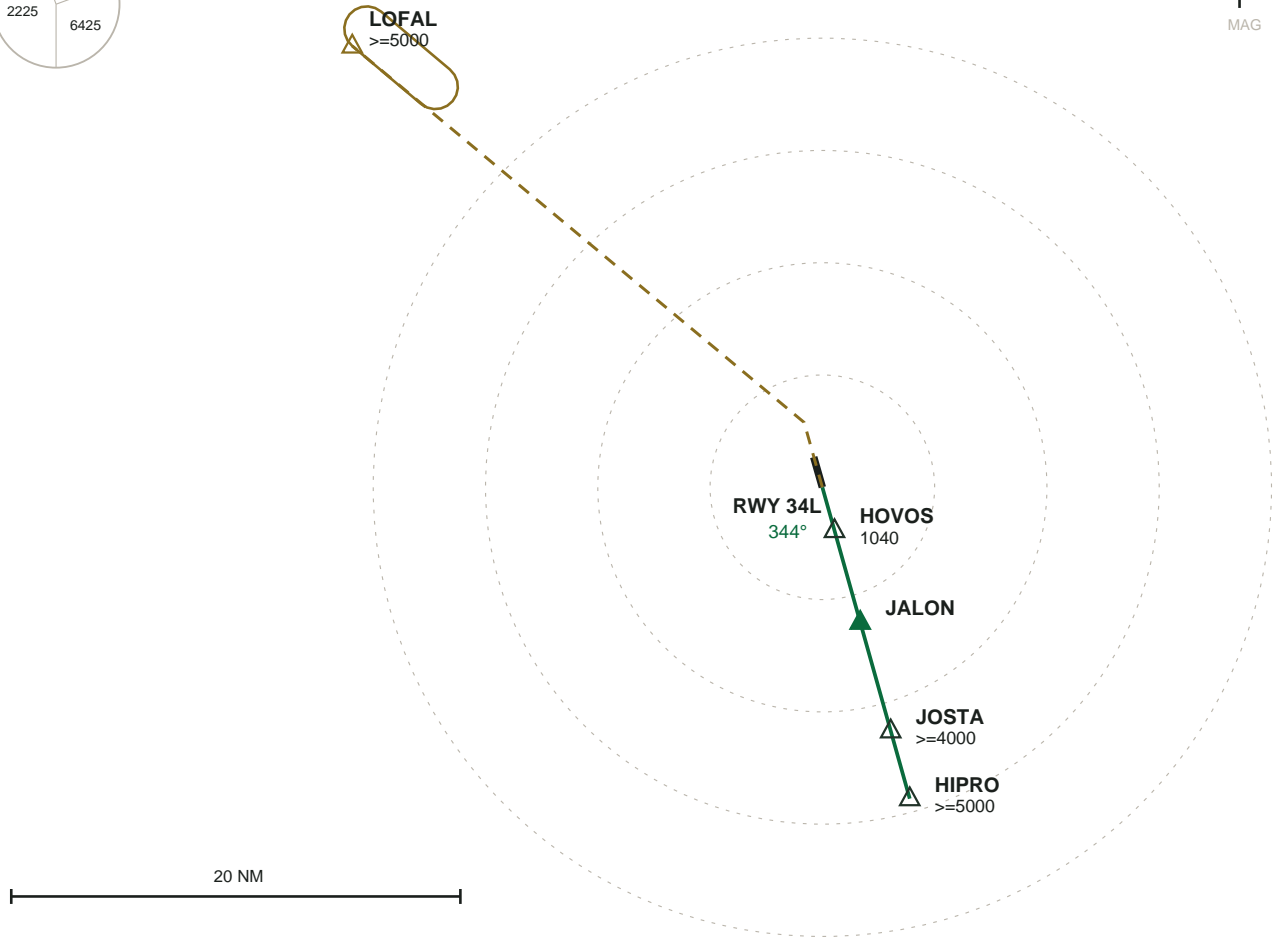
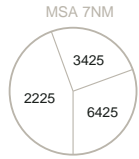


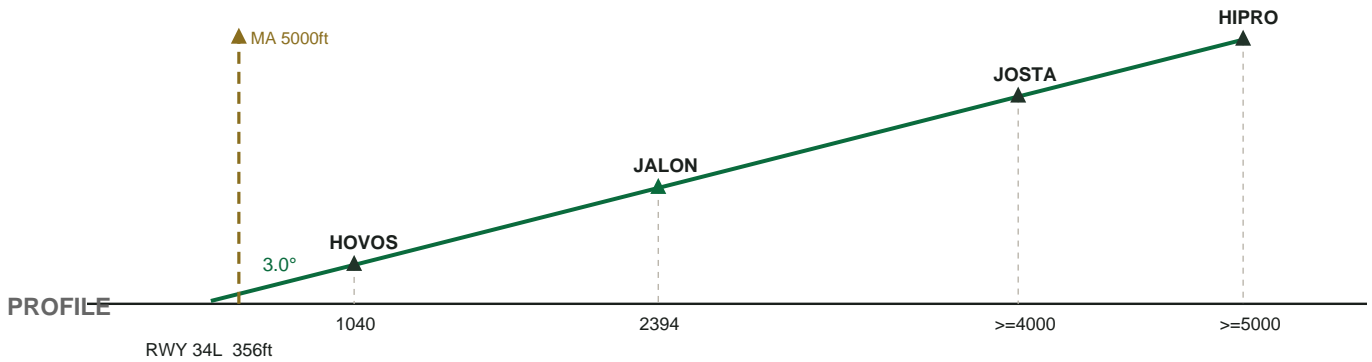
KSEA SEATTLE-TACOMA INTL

RNP 34L \hat{A} RWY 34L \hat{A} FAC 344°

AIRAC 2606



PLAN



PROFILE

MISSED APPROACH: Climb on heading 344° at or above 900 ft then hold at LOFAL, right turns, inbound 310°, at or above 5000 ft.