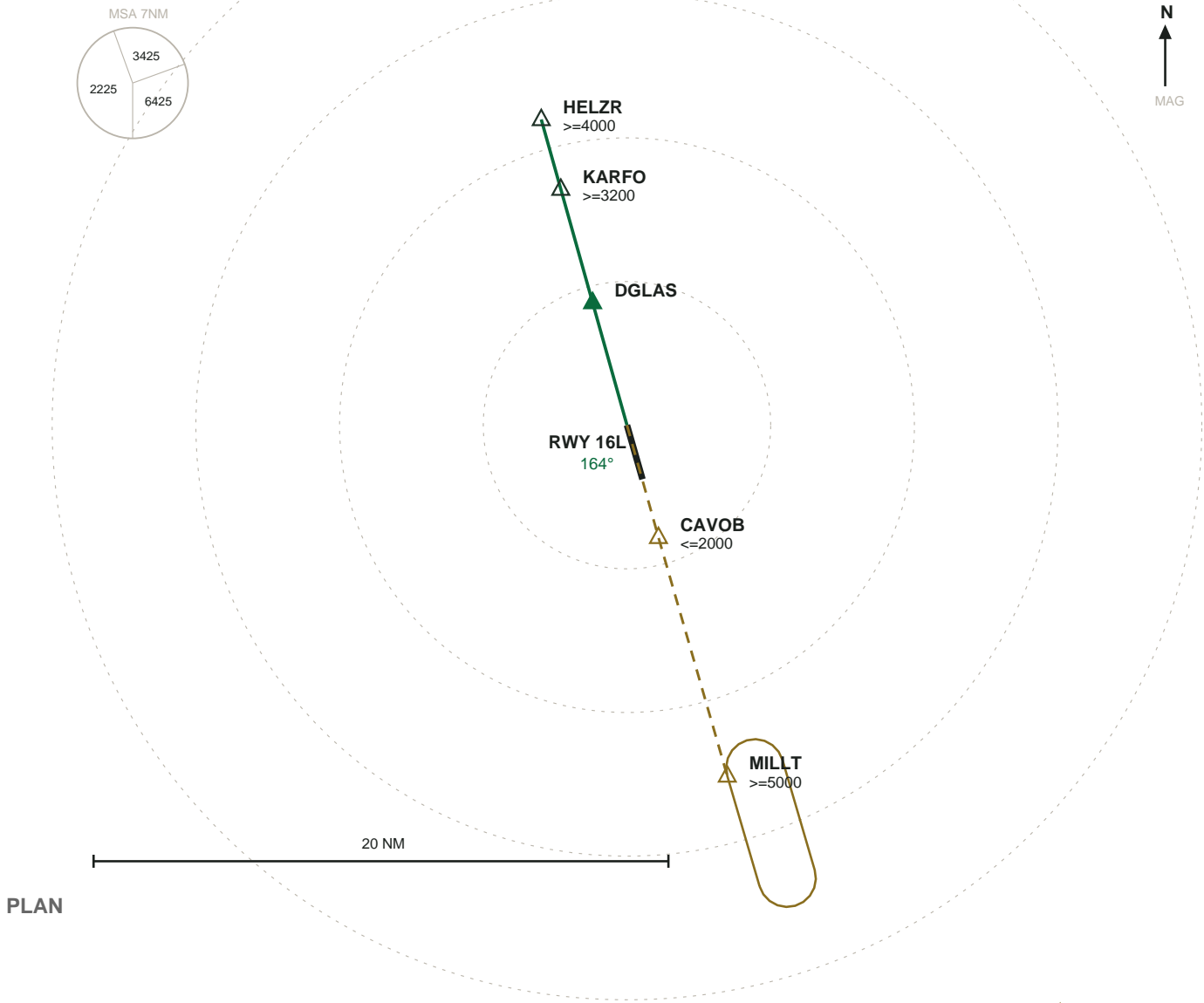


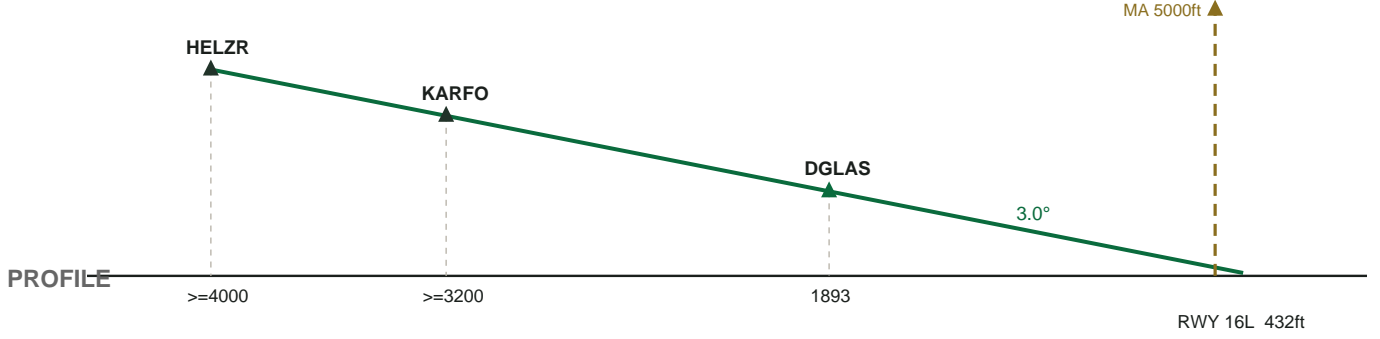
# KSEA SEATTLE-TACOMA INTL

RNP 16L  $\hat{A}$  RWY 16L  $\hat{A}$  FAC 164°

AIRAC 2606



PLAN



PROFILE

**MISSED APPROACH:** Climb on heading 164° at or above 700 ft then direct CAVOB, cross at or below 2000 ft then hold at MILLT, right turns, inbound 344°, at