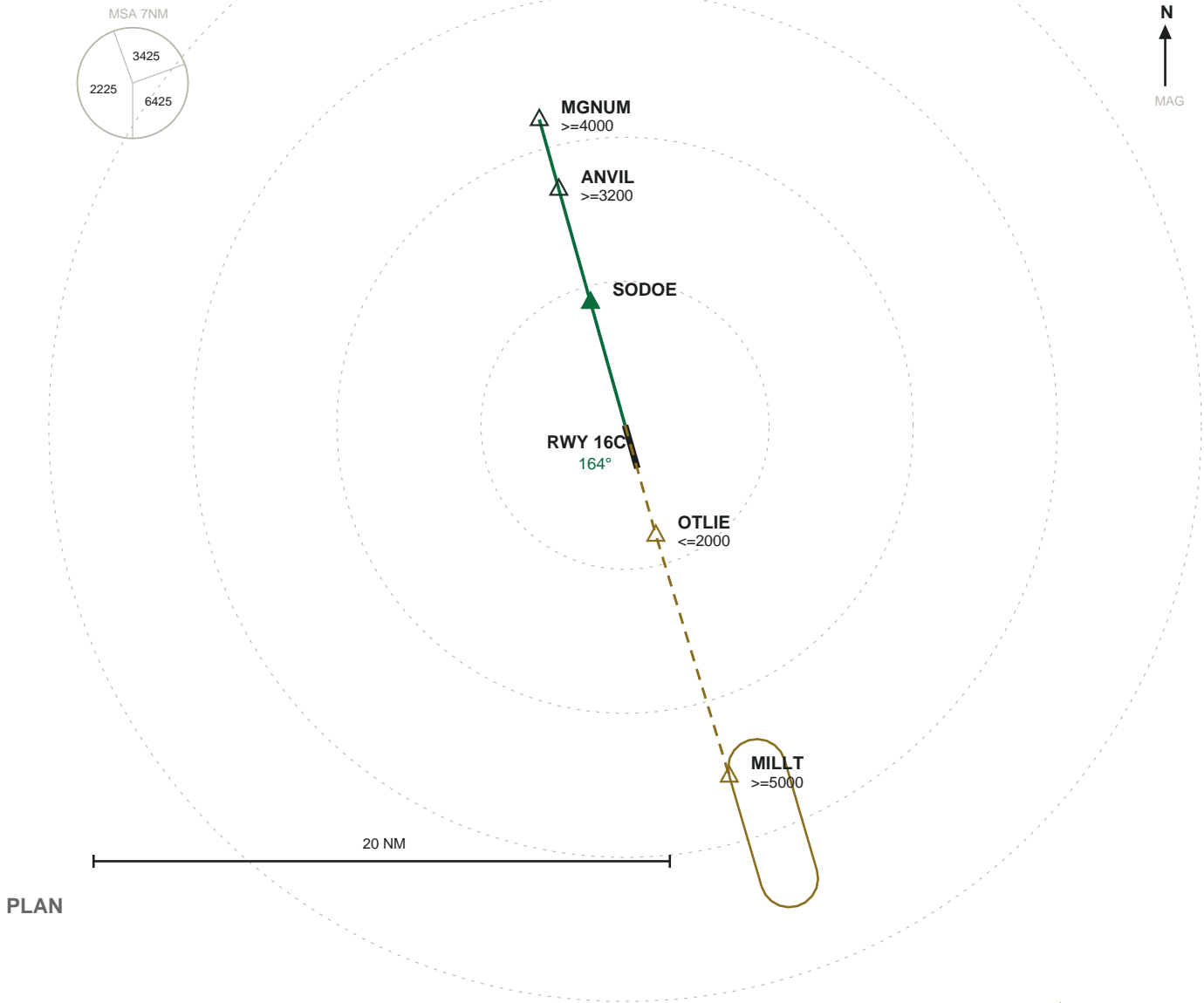


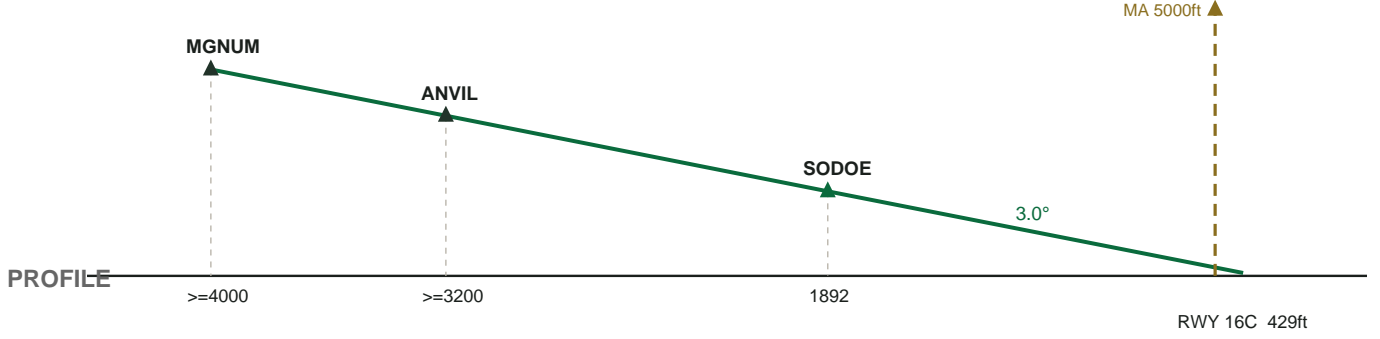
KSEA SEATTLE-TACOMA INTL

RNP 16C \hat{A} RWY 16C \hat{A} FAC 164°

AIRAC 2606



PLAN



PROFILE

MISSED APPROACH: Climb on heading 164° at or above 630 ft then direct OTLIE, cross at or below 2000 ft then hold at MILLT, right turns, inbound 344°, at 0