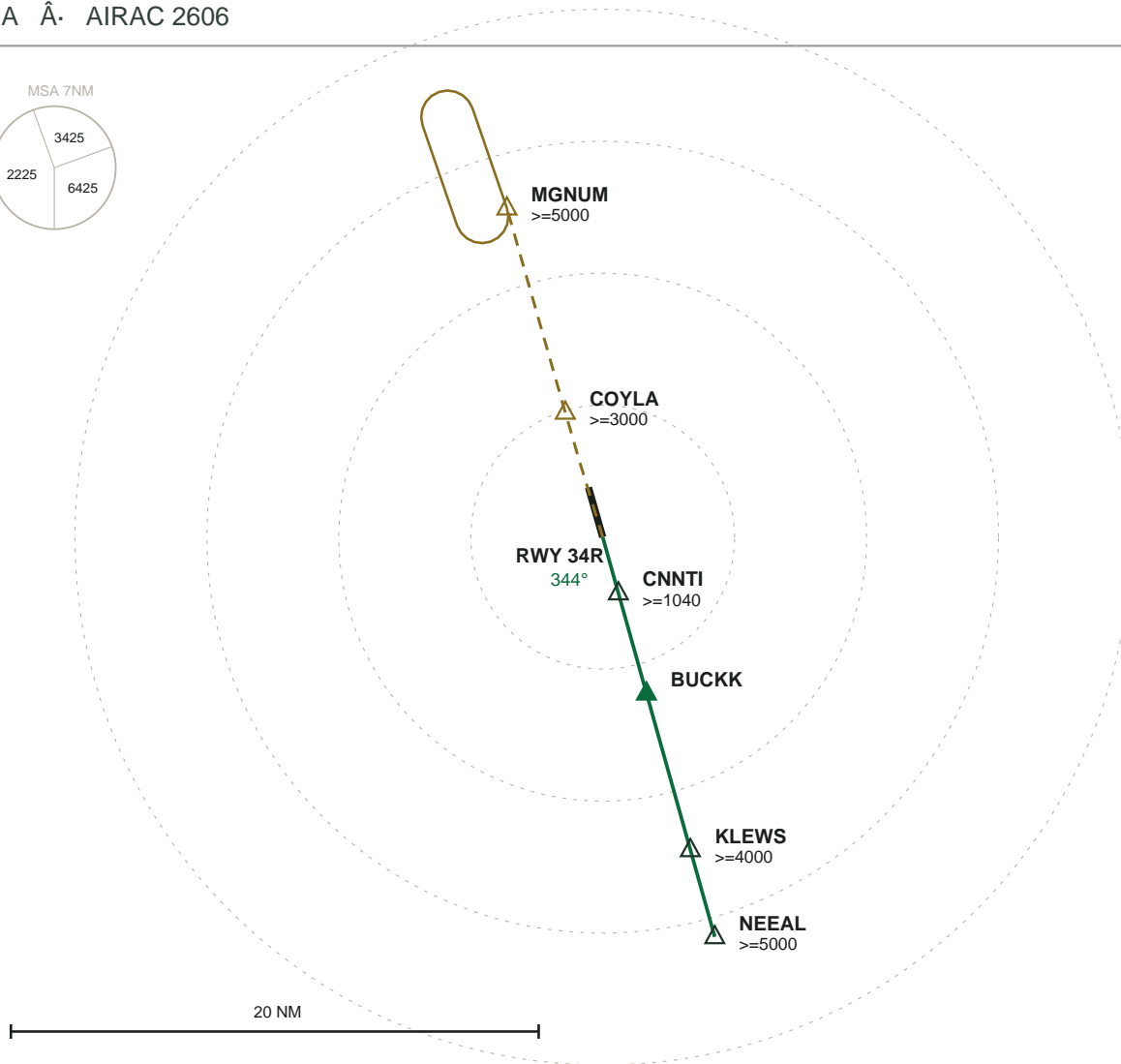
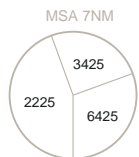


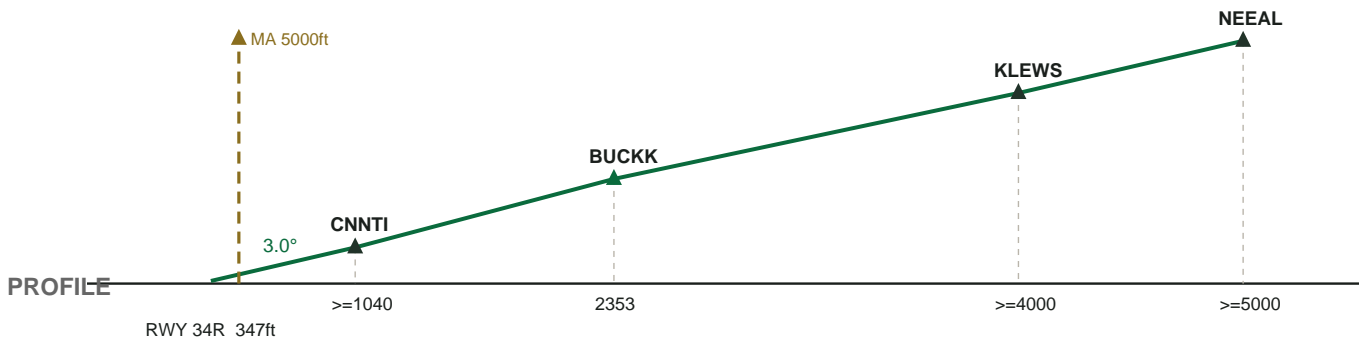
# KSEA SEATTLE-TACOMA INTL

LOC 34R  $\hat{A}$  RWY 34R  $\hat{A}$  FAC 344°

ILS ISEA  $\hat{A}$  AIRAC 2606



PLAN



**MISSED APPROACH:** Climb on course 343° then track 341° to COYLA, cross at or above 3000 ft then hold at MGNUM, right turns, inbound 161°, at or above