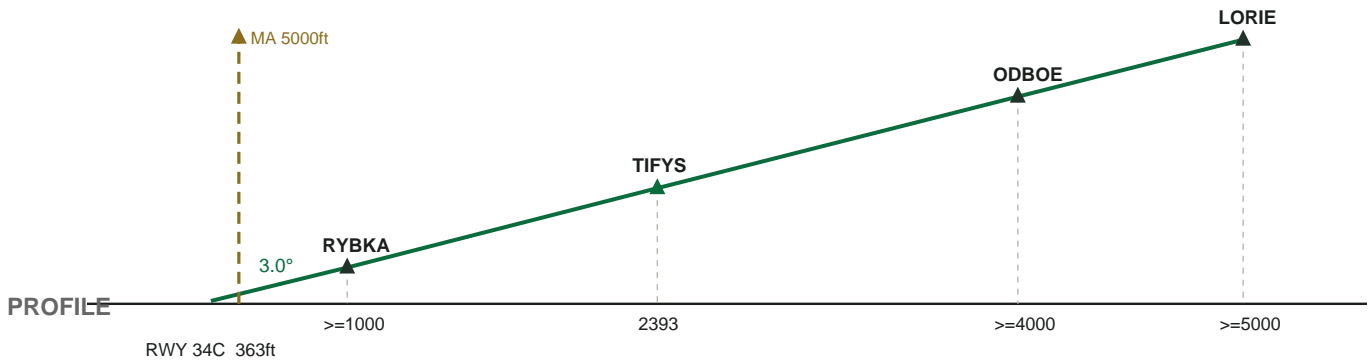
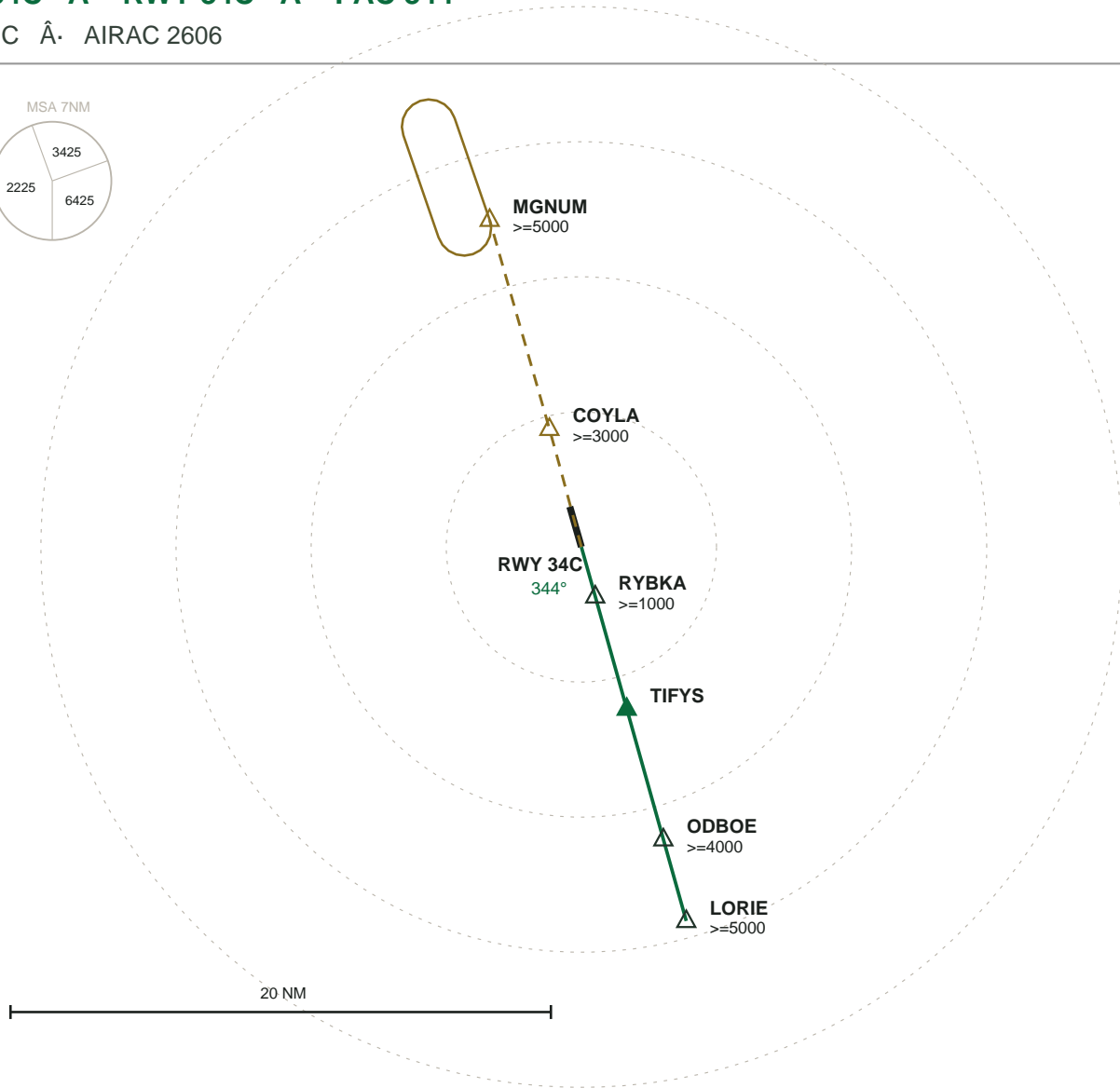
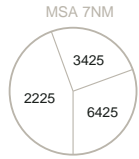


KSEA SEATTLE-TACOMA INTL

LOC 34C Â· RWY 34C Â· FAC 344°

ILS ITUC Â· AIRAC 2606



MISSED APPROACH: Climb on course 345° then track 341° to COYLA, cross at or above 3000 ft then hold at MGNUM, right turns, inbound 161°, at or above