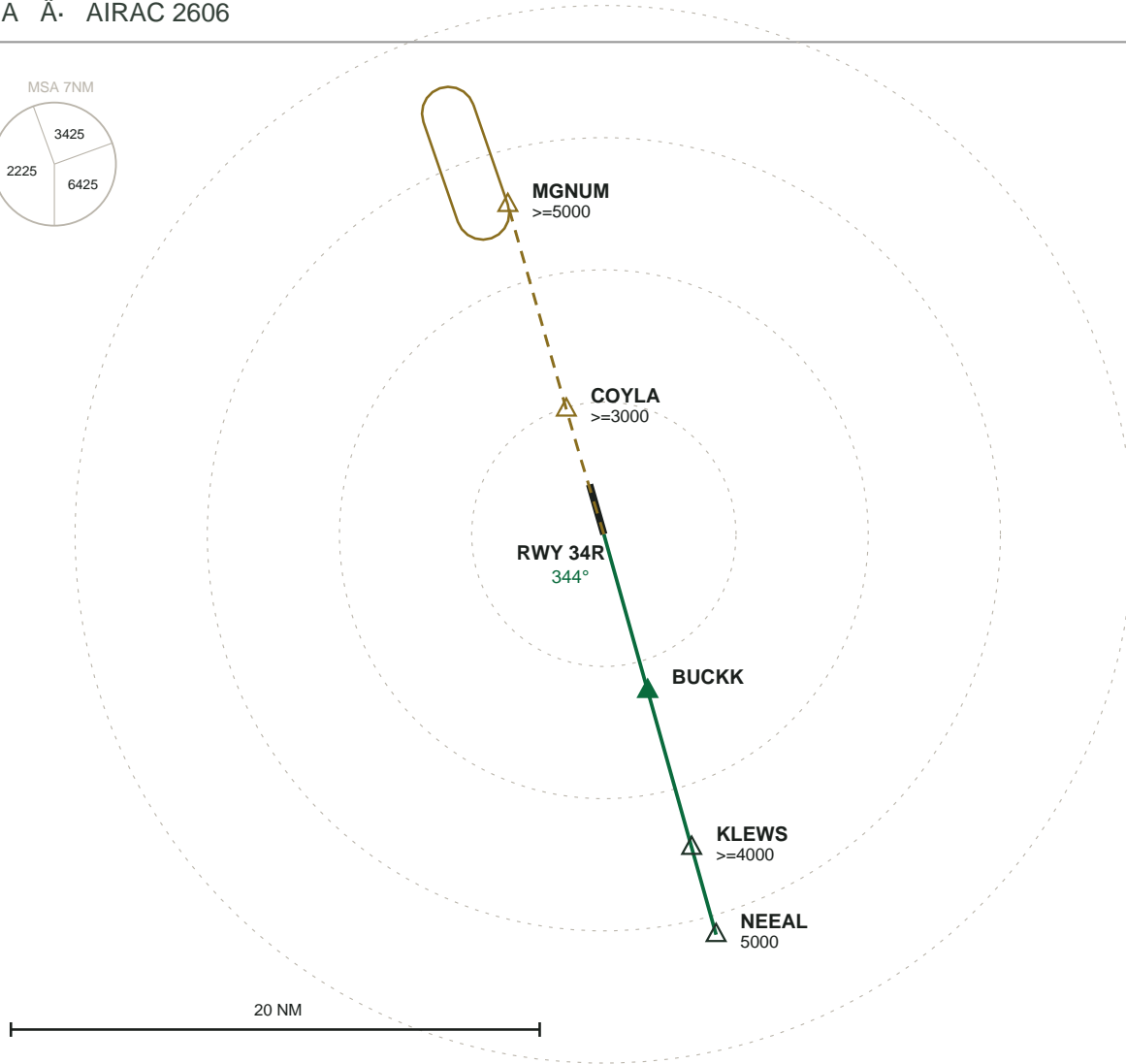
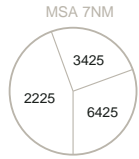


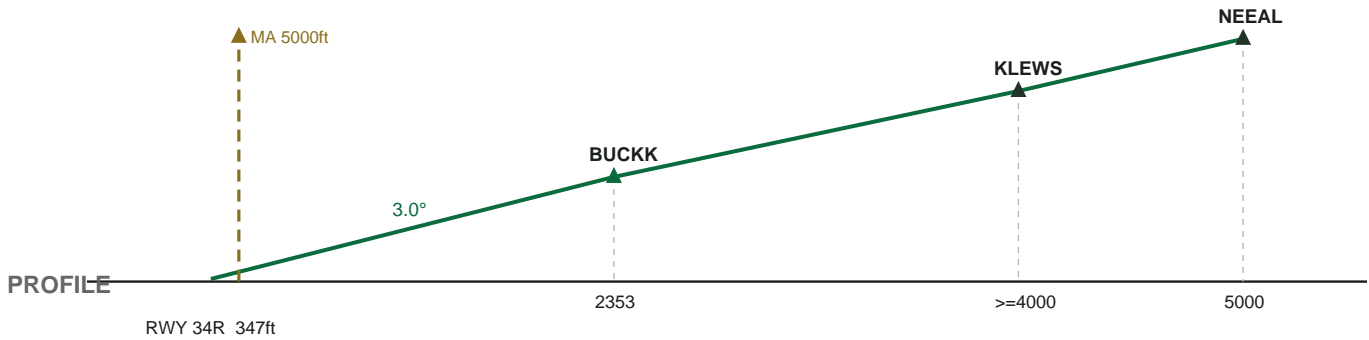
KSEA SEATTLE-TACOMA INTL

ILS 34R \hat{A} RWY 34R \hat{A} FAC 344°

ILS ISEA \hat{A} AIRAC 2606



PLAN



PROFILE

MISSED APPROACH: Climb on course 343° then track 341° to COYLA, cross at or above 3000 ft then hold at MGNUM, right turns, inbound 161°, at or above 5000 ft