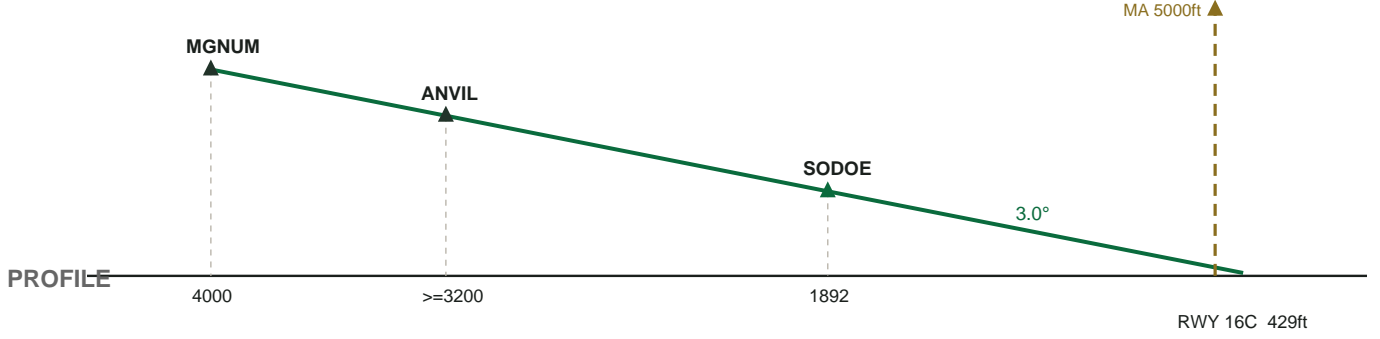
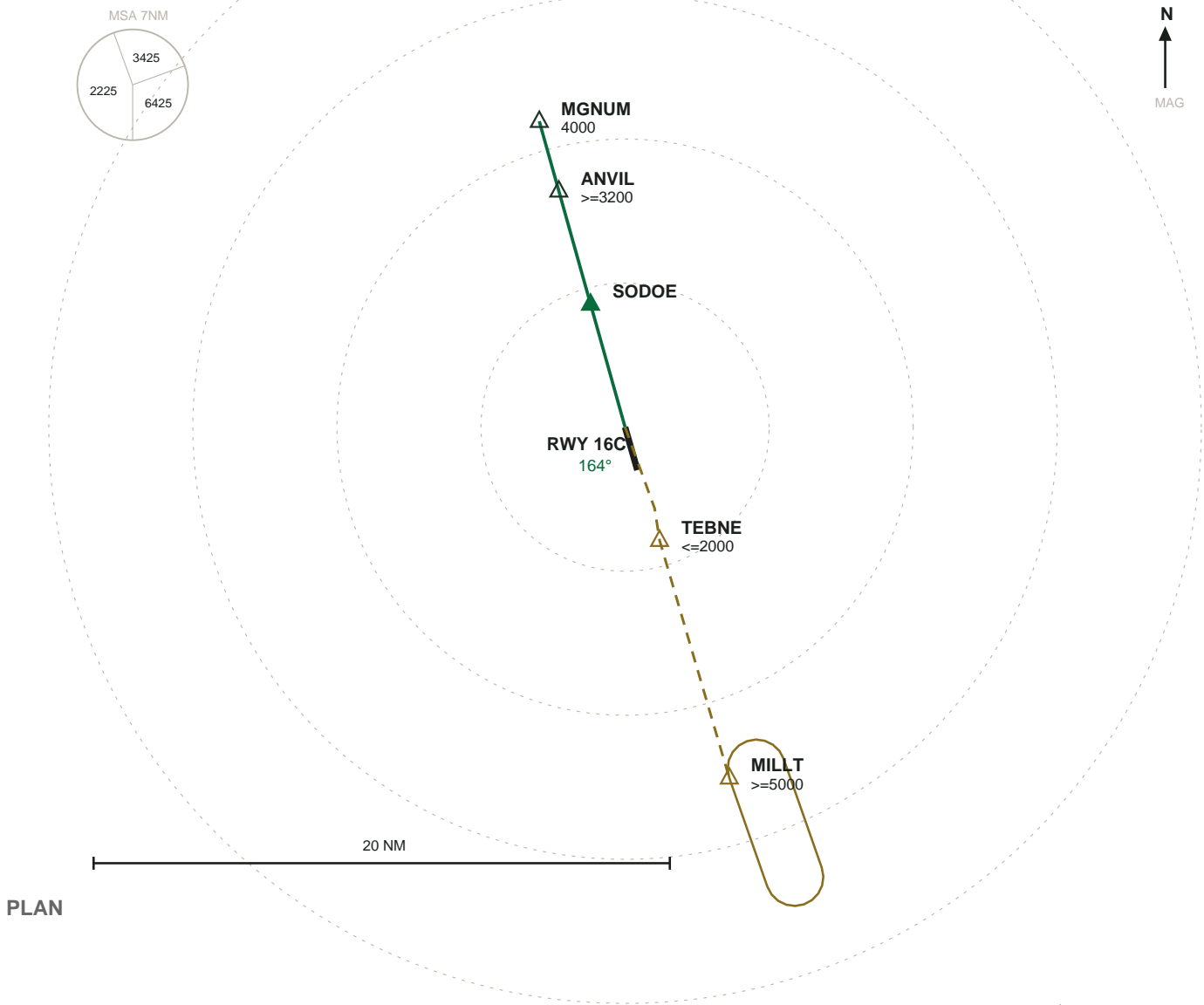


KSEA SEATTLE-TACOMA INTL

ILS 16C \hat{A} RWY 16C \hat{A} FAC 164°

ILS ISZI \hat{A} AIRAC 2606



MISSED APPROACH: Climb on course 160° then track 161° to TEBNE, cross at or below 2000 ft then hold at MILLT, right turns, inbound 341°, at or above 5000 ft