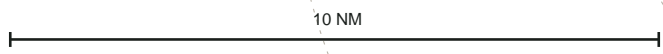
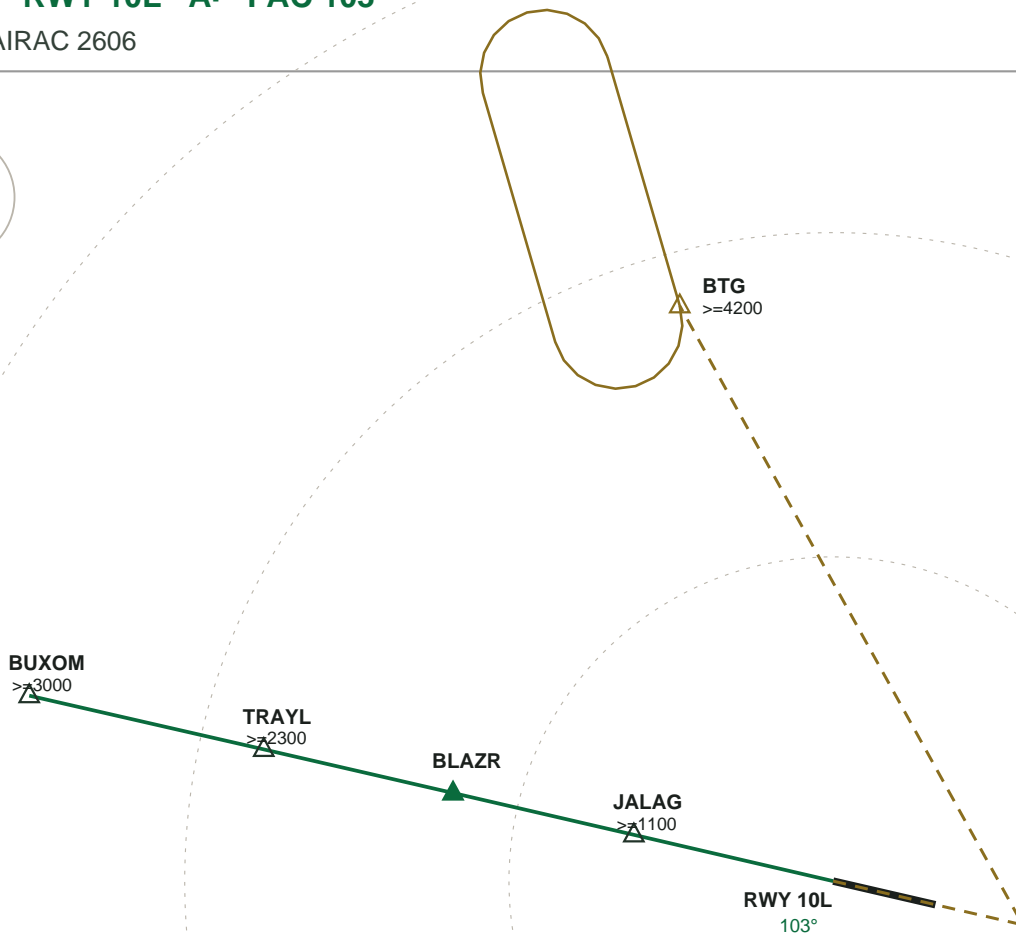
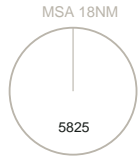


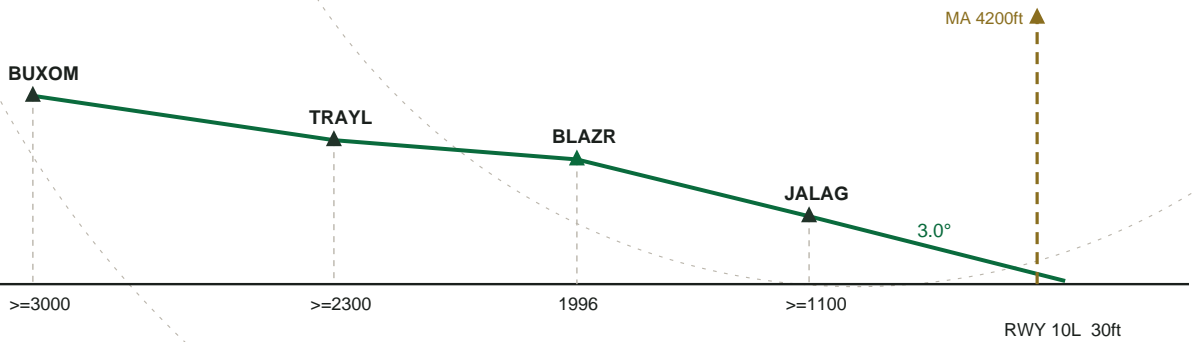
# KPDX PORTLAND INTL

LOC 10L  $\hat{A}$  RWY 10L  $\hat{A}$  FAC 103°

ILS IVDG  $\hat{A}$  AIRAC 2606



PLAN



PROFILE

**MISSED APPROACH:** Climb on heading 103° at or above 800 ft then hold at BTG, right turns, inbound 164°, at or above 4200 ft.