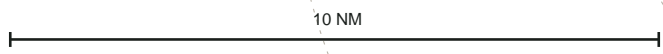
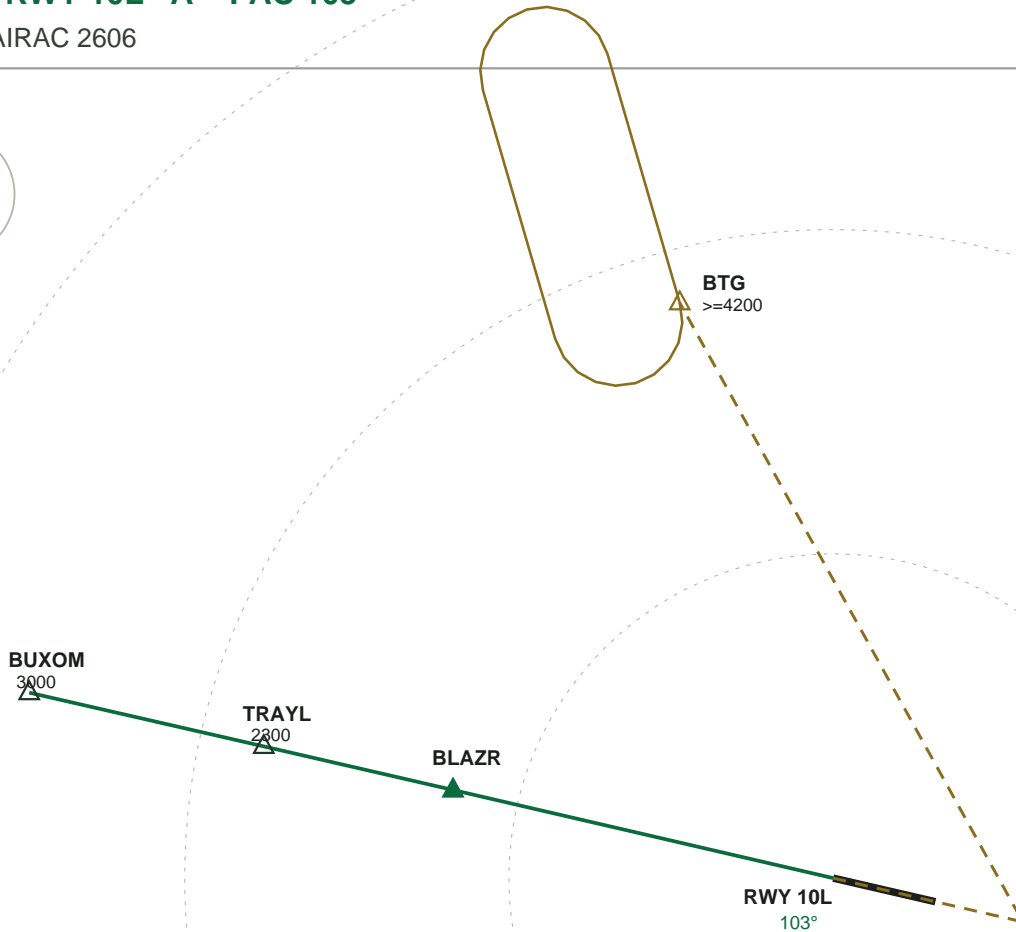
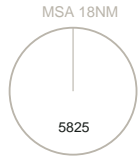


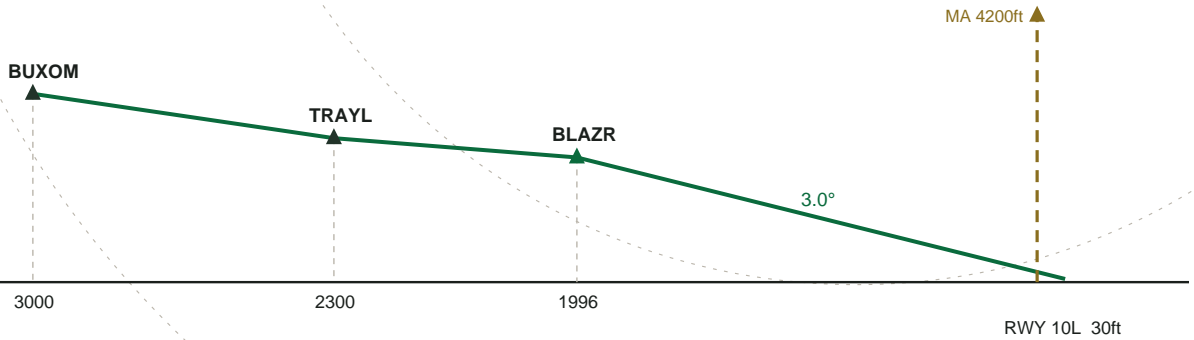
KPDX PORTLAND INTL

ILS 10L \hat{A} RWY 10L \hat{A} FAC 103°

ILS IVDG \hat{A} AIRAC 2606



PLAN



PROFILE

MISSED APPROACH: Climb on heading 103° at or above 800 ft then hold at BTG, right turns, inbound 164°, at or above 4200 ft.