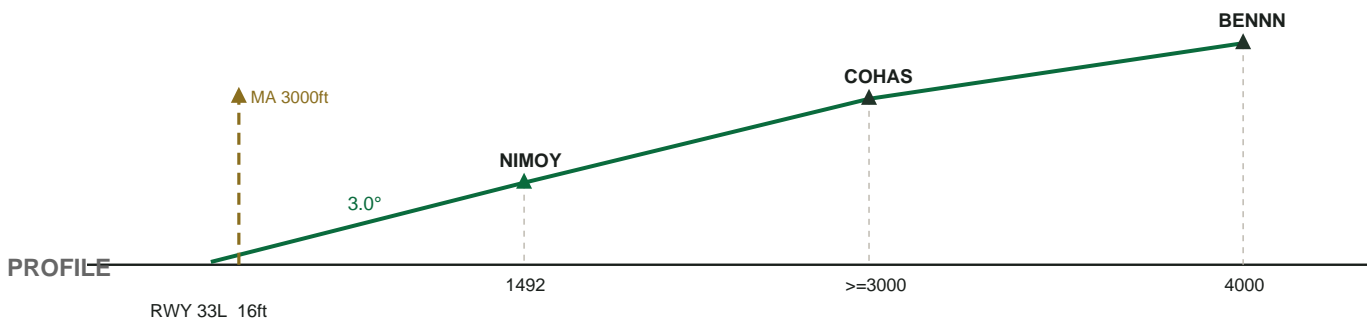
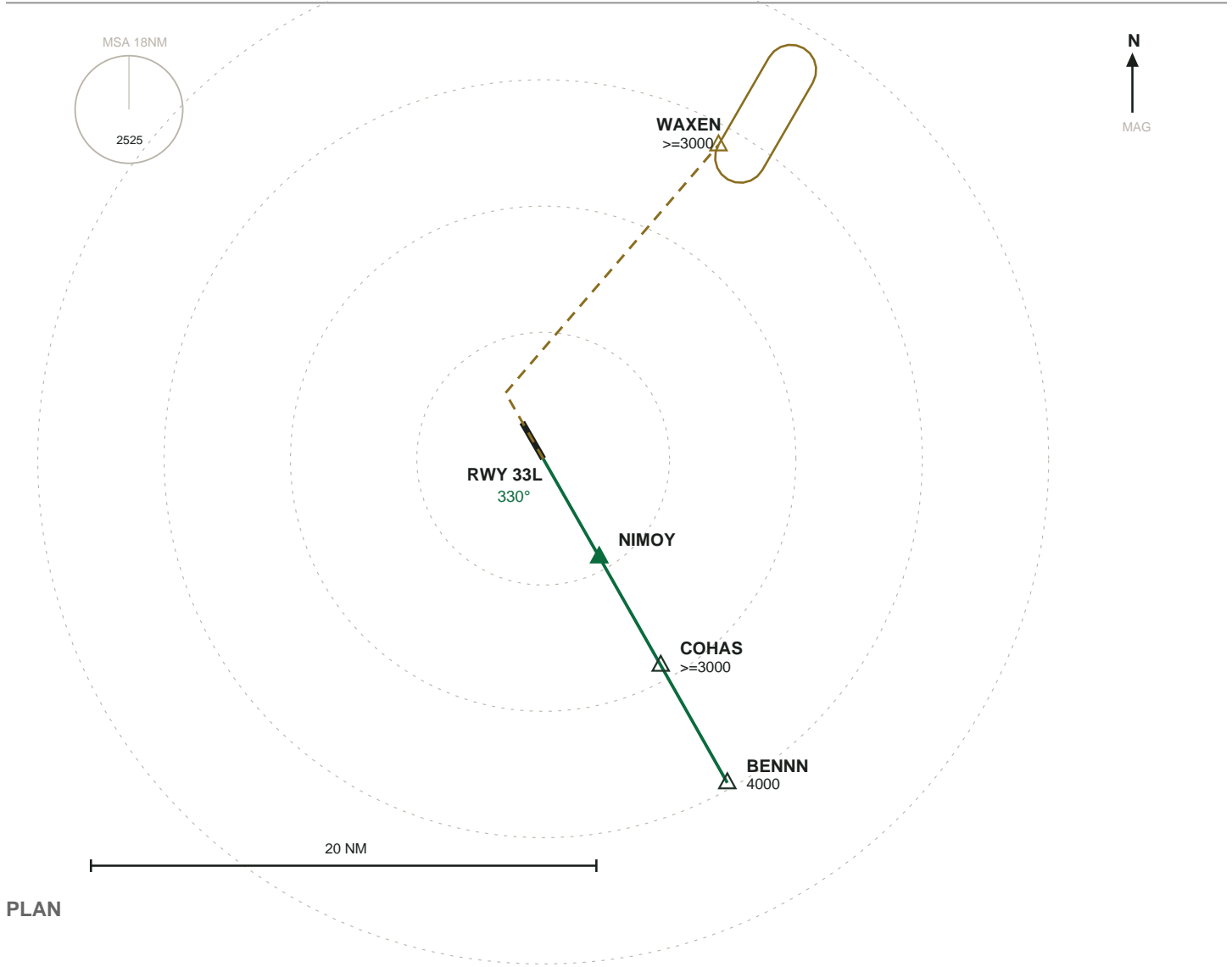


KBOS GENERAL EDWARD LAWRENCE LOGAN

ILS 33L \hat{A} RWY 33L \hat{A} FAC 330°

ILS ILIP \hat{A} AIRAC 2606



MISSED APPROACH: Climb on heading 330° at or above 1500 ft then hold at WAXEN, left turns, inbound 210°, at or above 3000 ft.